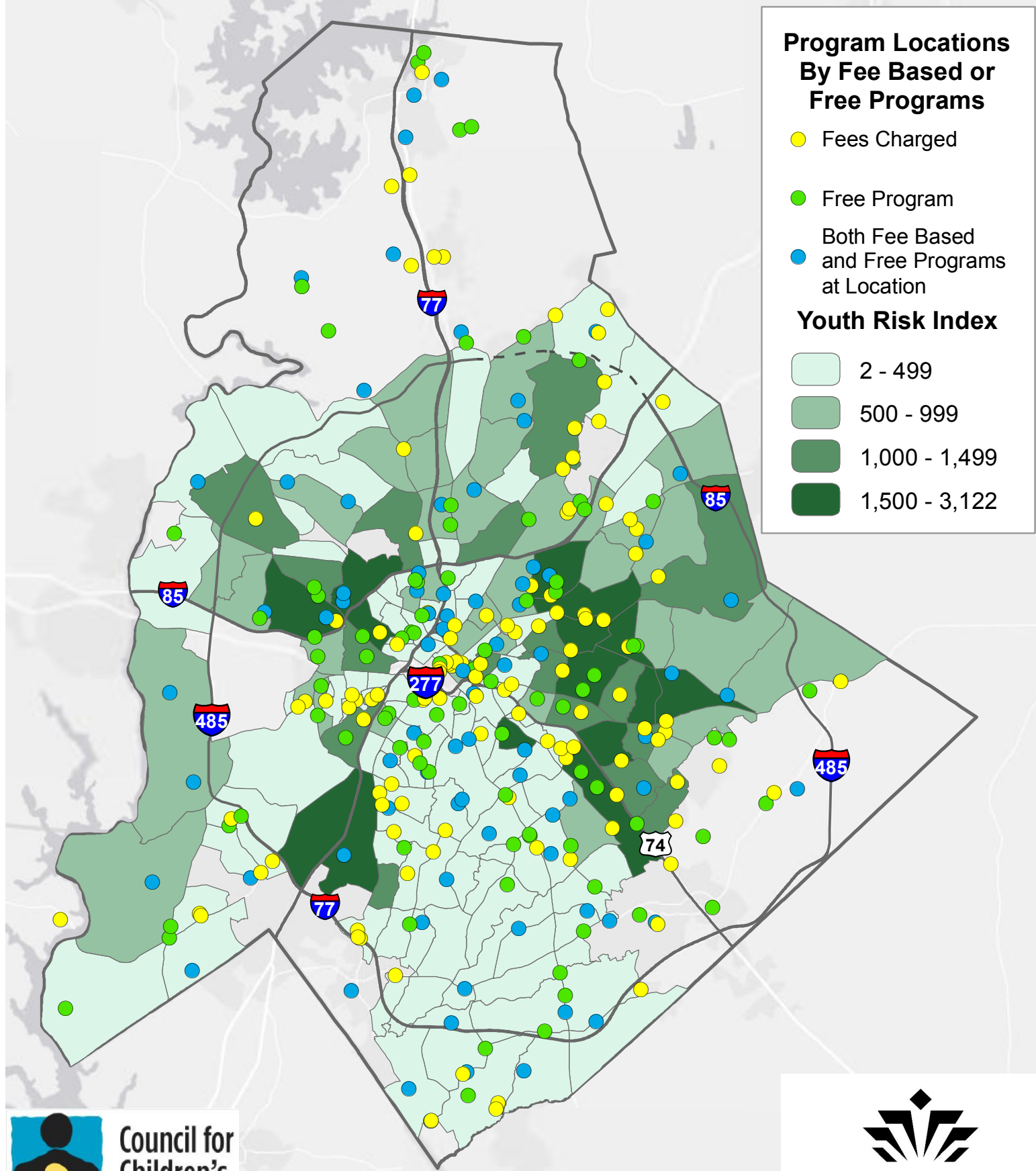


# Out Of School Time Programs Free and Fee Based Programs



## Program Locations By Fee Based or Free Programs

- Fees Charged
- Free Program
- Both Fee Based and Free Programs at Location

## Youth Risk Index

- 2 - 499
- 500 - 999
- 1,000 - 1,499
- 1,500 - 3,122



Sources: The Bridgespan Group 2011, City of Charlotte,  
Charlotte Neighborhood Quality of Life Study 2010

